

Model F5000 Laser Cell



A FlexLink standard solution

5267EN-4

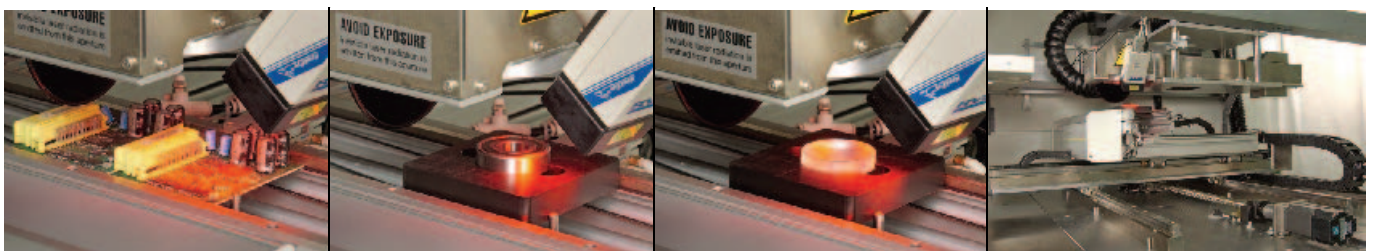
High Speed Laser Marking with FlexLink Laser Cell



FlexLink's modular automation cells offer cost efficient solutions with fast and easy reconfiguration. The automation level varies from simple pneumatic pick and place tasks to 6-axis robots, based upon standardized hardware and software modules with standardized interfaces.

FlexLink automation cells are suitable for all industrial segments, including the electronic industry with high ESD requirements, the automotive industry with rough environments as well as the medical and food industry with their high cleanliness demands.

FlexLink laser marking cell is a high speed laser marking system. It uses a common base platform that can accommodate a variety of laser options. The base module uses a CO₂ laser to perform the marking function. The base module has been designed to accommodate a multitude of different configurations to suit any applications and tolerance levels.



FlexLink Laser Cell

Standard features

- Unit uses standard SMEMA
- ESD safe design
- Servo controlled motion axis
- Buffers one product
- PC based control system
- Programmable width adjust
- User-friendly touch screen display
- CO₂ laser
- Safety covers to shield laser
- 2 axis laser head height adjustment
- Programmable laser marking position

Options

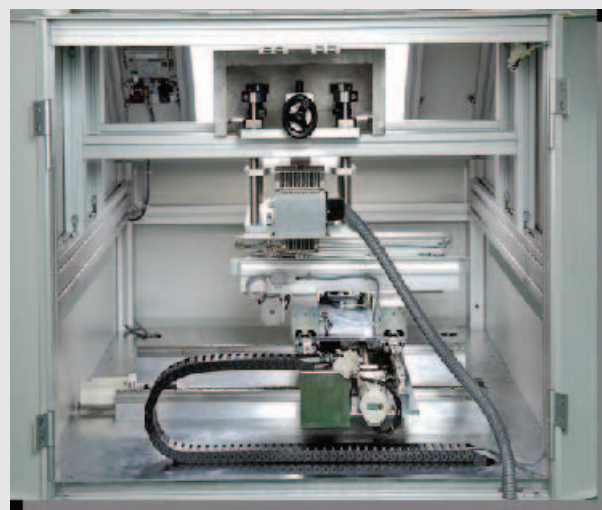
- Board locator system
- Board underside support bed
- Host control software and hardware links
- Pass/fail verification with additional hardware
- Pre/Post mark vision inspection
- Vision/scanner verification system
- Customized design for specific product or application (non PCB product)
- Other type of laser marking

Technical characteristics

- Machine dimensions (LxWxH):
1400 mm × 1150 mm × 1450 mm (55" × 45" × 57")
- Machine weight: 325 kg (715 lbs.)
- Board size: 50 mm × 50 mm up to 500 mm × 450 mm
- Work piece maximum height: 300 mm

Installation requirements

- Power: 100–240 V AC 50/60 Hz, 30 A
- Pneumatics: 550 kPa at 120 l/min (80 psi at 8 cfm)



For more information, please contact your local FlexLink sales unit. Specifications are subject to change without notice.